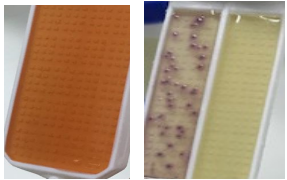
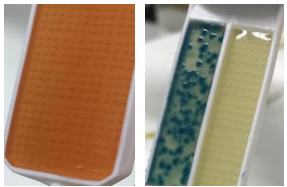


LACTOBAC INTERPRETAÇÃO DE RESULTADOS

▶ BACTÉRIAS GRAM NEGATIVAS

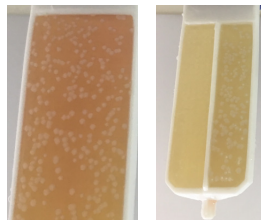


Escherichia coli



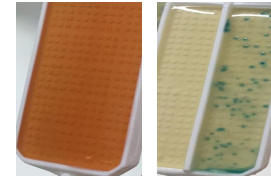
Klebsiella spp

▶ LEVEDURA / PROTOTHECA

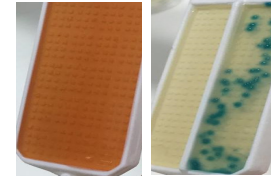


▶ BACTÉRIAS GRAM POSITIVAS

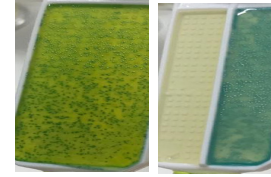
Streptococcus agalactiae *



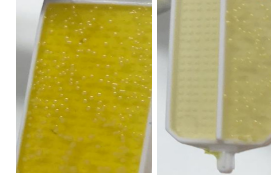
*Streptococcus uberis /
Lactococos* *



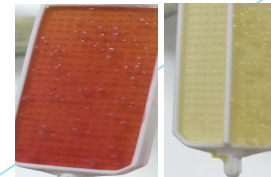
Enterococcus spp *



Staphylococcus aureus **



*Staphylococcus coagulase
negativa*



* Lactobac Diferencial ** Staphy Test